



PROFESSIONALS FOR A NATURAL INDOOR SPACE



INTERIOR LANDSCAPE DESIGNERS CREATE HAPPINESS FOR EMPLOYEES, CUSTOMERS AND PATIENTS

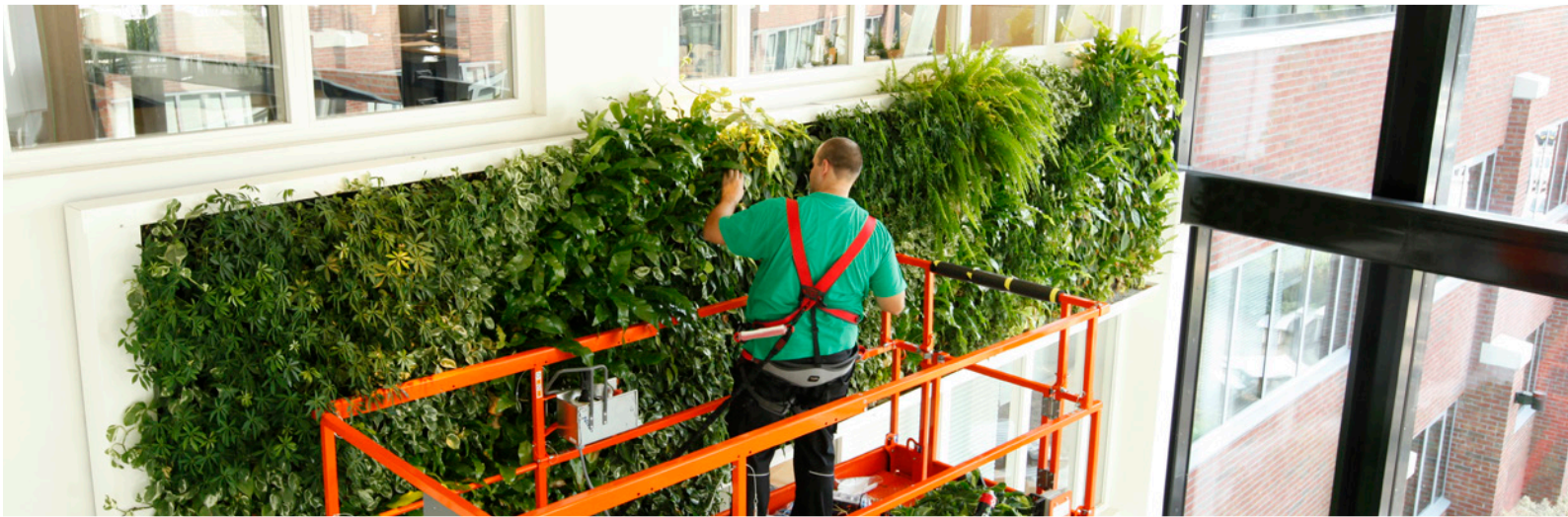
GREENERY WILL MAKE YOU HAPPY AND HEALTHY

The shift towards more sustainable, circular, bio-based and healthy buildings often entails growing awareness of the added value of greenery. Too many people still suffer from unhealthy living and working conditions as well as a stressful pace of life in cities. Research has shown that greening up the environment

really makes a difference. It purifies the air, improves humidity, and people feel more relaxed and healthy either being in green spaces or being able to look at them.



CLEVER TECHNOLOGY ALLOWS YOU TO CREATE AND MAINTAIN AN INDOOR JUNGLE



INTERIOR PLANTS CREATE VALUE

It is still difficult to put exact numbers on the reduction in sickness absence or the increase of productivity, but wherever it has been tested, the addition of plants reduces sickness absence and improves productivity with percentages ranging between 5 and 20%. Employee costs are by far the highest cost item for an

organization, so just imagine what this would mean for a staff of 100 people. Silent and immobile as they may seem, plants do carry a significant value.

GREEN IS SUSTAINABLE

Nowadays more and more architects and their clients realize that buildings must be sustainable. Materials are valued for their origin, reusability and circularity. Suppliers and clients develop new, different and longer lasting relationships in which, besides production, management and maintenance are important as well. Greenery is a natural component in this new building process, because it strongly relates to both the people and planet aspects of a sustainable building. Plants can be part of an interior leasing plan, and all used materials can be recycled for new purposes after their life cycle.



CUSTOMERS
SPEND MORE IN A
GREEN SHOPPING
CENTRE



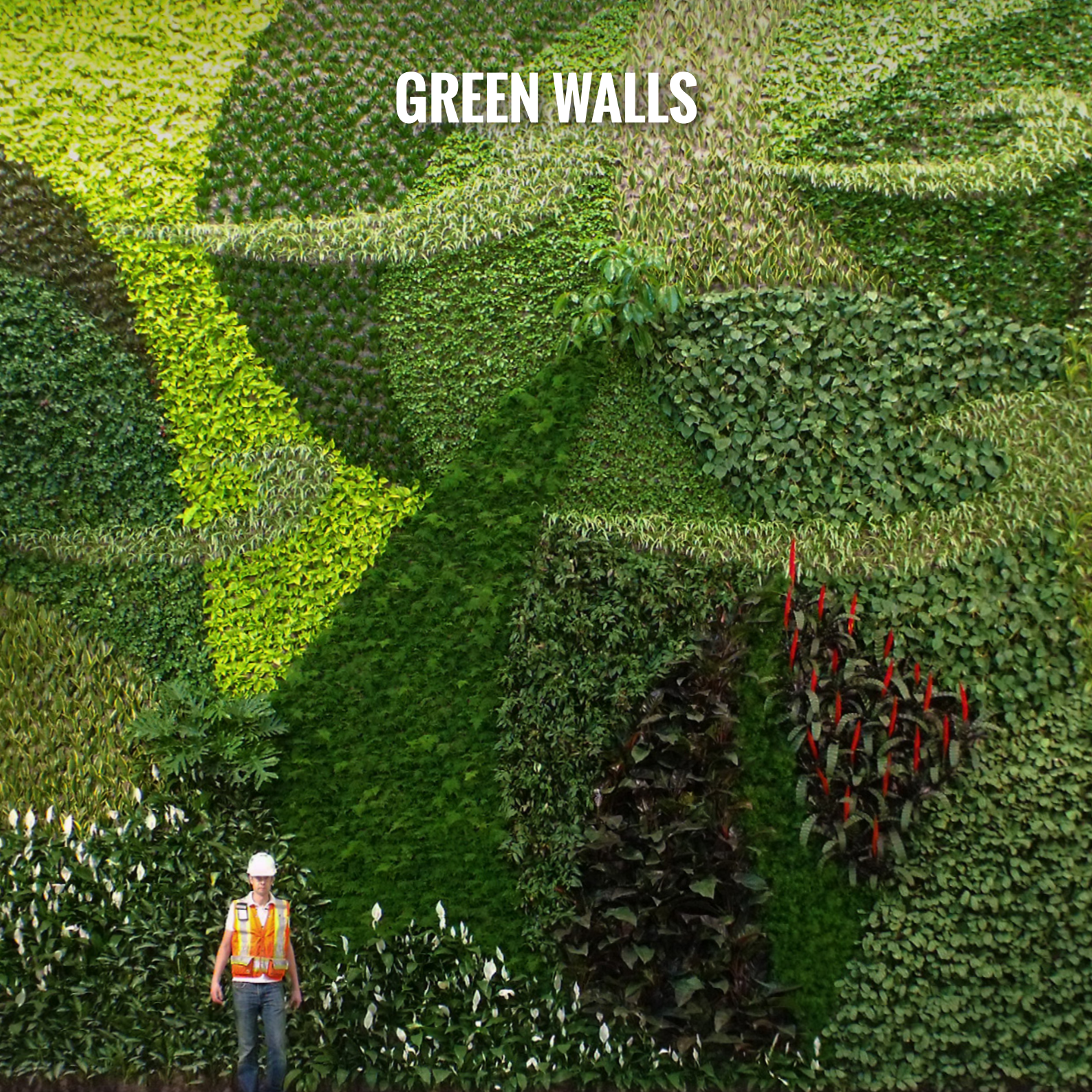


WORKING TOGETHER IN EILO

With professionalism and knowledge at the cornerstone of interior landscape design, four national trade associations of Interior Landscapers have decided to closely collaborate on a European level. By organizing Best Projects Awards and excursions, knowledge exchange as well as working

relations are strengthened. Furthermore, EILO has developed into a strong partner and advocate towards adjacent sectors and sectoral organizations.

GREEN WALLS





GREEN WALLS HUMIDIFY
AND CLEAN THE AIR,
AND REDUCE NOISE
USING VERY LITTLE
VALUABLE FLOOR SPACE



WHAT DOES AN INTERIOR LANDSCAPER DO?



BEFORE THE PROJECT ADVICE

Advice on planting in combination with water, light and temperature requirements and adaptations.

Advice on the planting schedule.

Knowledge about several systems and solutions.



DURING THE PROJECT DESIGN

An interior landscaper designs the look and feel of the plant object or wall. Knowledge of which plants will thrive and how plants will develop are basic aspects of a planting design.



DURING THE PROJECT IMPLEMENTATION

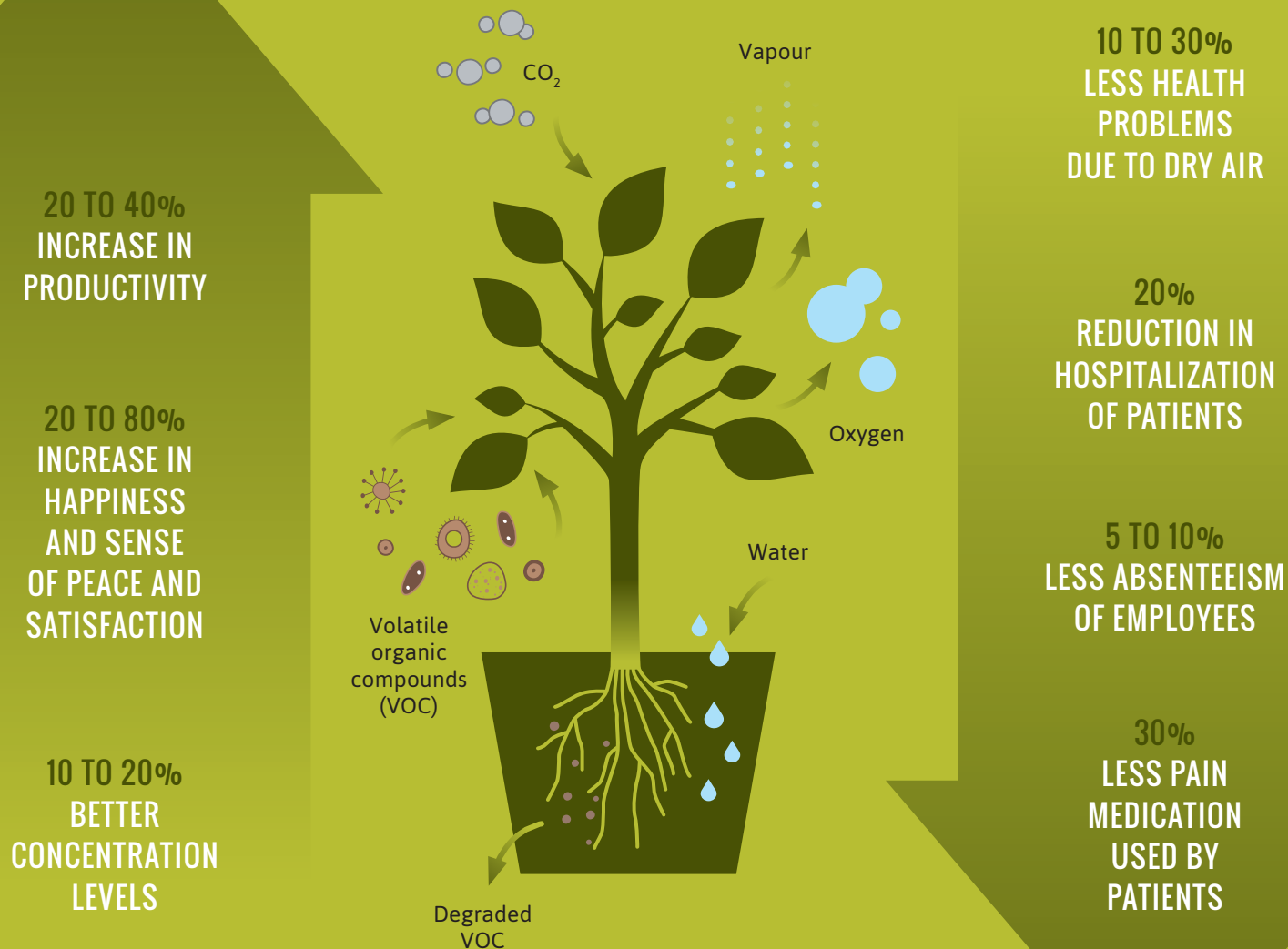
The interior landscaper not only takes care of the planting, but also implements all hardware, irrigation systems, and -if necessary- lighting.



AFTER THE PROJECT MAINTENANCE

Keeping plants and trees happy, healthy and shining also requires extensive knowledge about the plant, its growing conditions, ways to fight diseases and when to prune. Interior landscapers very often offer maintenance contracts with a 100% plant guarantee.

WHAT PLANTS DO FOR US



GREEN FURNITURE





**PLANTS ARE SO
MUCH MORE THAN
JUST BEAUTIFUL,
THEY ACTIVELY
CLEAN THE AIR AND
EVAPORATE WATER**



BRAIN SCANS PROVE
**PEOPLE FEEL
SAFER IN
NATURAL
ENVIRONMENTS**



THE SCIENCE OF BIOPHILIA

As soon as we enter a space with fresh air, lots of plants, natural materials, the sound of water or a wide view of our surroundings, our brains relax. They know we are in a natural, safe space. This field of research is called Biophilia. Architects, designers and interior landscapers work with this knowledge now because it works. People who work, live or shop in nature inspired spaces show amazing changes: less painkillers, better concentration, reduced sick leave, more spending etc.

BRING NATURE INSIDE WITH TREES

Creating an indoor forest creates a great natural effect but can present considerable technical challenges. Roots need space and trees are often too big to fit through the door. Trees are big investments and it is therefore good management to seek professional advice of an interior landscape designer in the early design stages as well as during the construction of a building.





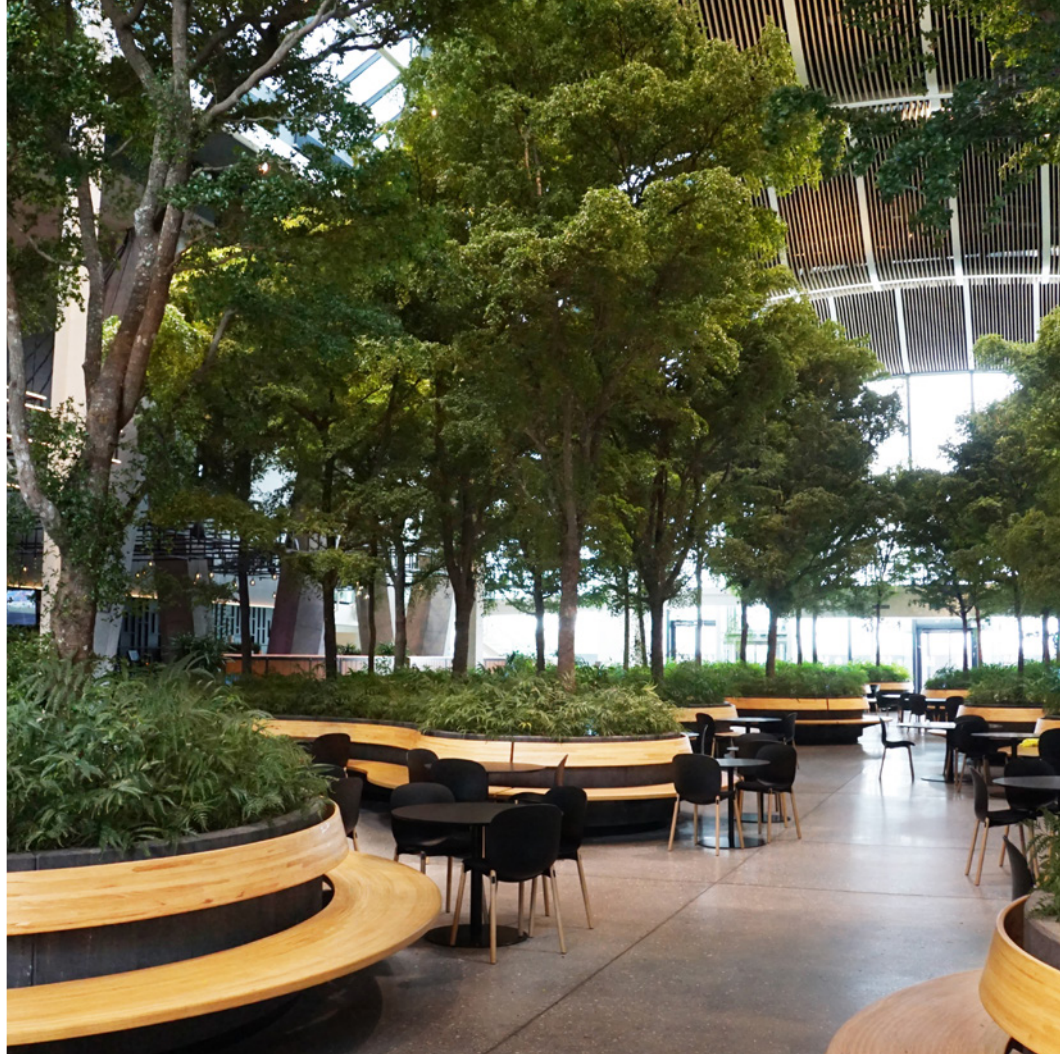
THE AMAZING TRIP OF AN INDOOR TREE

Most of our indoor plants love to grow in the warm, humid and not too sunny environments of the jungle. Most of our indoor trees actually even start their lives in local nurseries in the Tropics. As soon as they have grown enough they are shipped to Europe. Before going to their final destination they must need

to acclimatise to our light cycle and lack of light intensity. They have to go to 'light and season school'. Only after two years of gradual adaptation in very well equipped greenhouses will they be ready to go to their final destinations.



GREEN CAN BE A
VIBRANT EYE-CATCHER
THAT MAKES YOUR
SPACE LITERALLY
COME ALIVE



HIGH TECH INTERIOR PLANTING

Nowadays interior landscape designers make use of new technologies in lighting and irrigation and are thus able to install and easily maintain the biggest and most exotic plants, plant walls and trees imaginable. And to do this virtually anywhere, no matter how complicated the place or client wishes. Dark

corners and little floor space need no longer be a problem. Interior landscapers know the exact needs of all plants in terms of feeding, humidity, lighting and rest periods, which enables us to keep your green oasis, walls, spirals and hanging and ceiling installation vibrant and healthy for years to come.

EILO IS A COOPERATION OF EUROPEAN INTERIOR LANDSCAPERS

EILO is a founded by four national trade associations of Interior Landscapers: Nordic Green (Sweden, Norway, Finland), U.N.E.P (France), FvRH (Germany) and the VHG (The Netherlands). We are constantly growing and have members from all over Europe.

We connect professional interior landscapers in order to share knowledge, expertise and inspiration. On our website and social media we promote interior landscaping.

Visiting adress:
De Molen 30
3994 DB Houten
The Netherlands

Mailing adress:
Postbus 1010
3990 CA Houten
The Netherlands

Phone: +31(0)30 659 5550
Mail: info@eilo.eu

You can also follow us on
Facebook or LinkedIn

Find your local interior landscaper:

WWW.EILO.EU

